



Split tray sorter

The split tray sorter is a space efficient automated sorting solution that sorts all kinds of products. It can be used to sort outgoing goods for shipments as well as returned goods for restocking.

The trays circulate in a horizontal plane based on an oval layout. To suit different operational requirements, the shape can either be a 'closed' or an 'open' where the operators can also work in the open space on the inside of the machine.

The products are transported on trays. Each tray opens like the nose wheel or bomb bay doors of a plane. The articles are discharged directly into the shipping box or chutes. Induction of products can be done manually or automatically.

Split tray sorter layout

- Oval
- Wide oval
- Extra wide oval

Features

- Capacity up to 14.400 items/hour with 1 induction zone
- Sorting envelopes, parcels and polybags
- Flexible design to match the available space
- Automatic or manual scanning of products
- In-house developed warehouse control system

Induction of products

There are several ways to induct the products into the trays:

- Manual induction from groundfloor
- Manual induction from a platform
- Automatic induction by using an induction belt
- Semi-automatic infeed induction
- Smart hybrid singulation system

Product identification

In order to identify the products, different methods can be used:

- Coding the desired products on a touchscreen
- Manually scanning of the products' SKU bar code
- Automatically scanning of the products' SKU bar code

Peripheral systems

All sorts of peripheral systems are available for the split tray sorter:

- Conveyor systems
- Automatic box closing, taping or labeling systems
- Dimensioning, weighing and scanning systems
- Elevators
- Storage systems
- Marking and identification systems
- Warehouse control systems



Product dimensions

Min. 40 x 10 x 2 H mm

Max. 750 x 550 x 200 H mm



Product weight

Min. 0.02 kg

Max. 5 kg



Capacity per hour

Max. 14.400 / induction zone

Configuration options

Exits

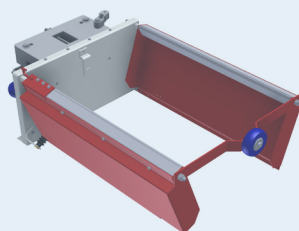
Possible exits include cartons, roll cages, postal bags, trolleys or chutes..



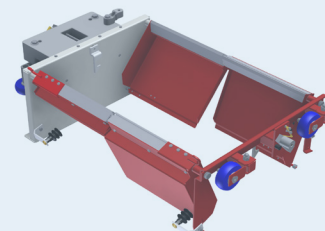
Cartons , chutes roll cages, trolleys or postal bags

Trays

We offer two types of trays, the split and tilt tray. Both types come in a single and double variant, enabling a capacity up to 14.400/hr.



Single



Double

Equinox MHE

sales@equinoxmhe.com | +31 252 526 000 | www.equinoxmhe.com



Follow us on LinkedIn



View our videos